

KIH Database

Kronikerservice – en teknisk guide.

18. september 2014

Indholdsfortegnelse

Indholdsfortegnelse	2
Indledning	3
Afgrænsning.....	3
Referencer	3
Løsningsoverblik.....	3
Teknisk vejledning	4
Anvendelse af SOSI og kald af service.....	5
MonitoringDataset (MDSS v. 1.0.1)	6
Upload af monitoreringsdata	6
Hente monitoreringsdata	7
Slette monitoreringsdata	8
MonitoringDataset – v2 (MDSS v. 1.0.1)	9
Upload af monitoreringsdata	9
Hente monitoreringsdata	11
Slette monitoreringsdata	13
MonitoringDataset (MDSS v. 1.0.2)	13
Hente monitoreringsdata	13
Upload af monitoreringsdata	14
Slette monitoreringsdata	14
Dokumenthistorik.....	14

Indledning

Nærværende dokument er en teknisk guide til brug for projekter, som ønsker at anvende Kroniker services fra KIH Databasen.

Afgrænsning

Nærværende dokument er ikke:

- En komplet gennemgang KIH databasen eller arkitekturen for KIH databasen
- En gennemgang af Kroniker servicen
- En gennemgang af MonitoringDataset servicen

Referencer

Følgende referencer anvendes i dette dokument:

SOSIPROG	SOSI Programmers Guide v. 1.5.3 http://digitaliser.dk/resource/456411/artefact/SOSI+programmers+guide.doc
DGKS	Den Gode Kroniker Service v 1.0 http://www.medcom.dk/dwn5626
MDSS	MonitoringDataset service v.1.0.1
HSUID	HSUID header http://svn.medcom.dk/svn/drafts/Standarder/Den%20gode%20kronikerservice/IFS0006%20Healthcare%20Service%20User%20Identification%20Header.docx

Løsningsoverblik

KIH Database udstiller MonitoringDataset service.

Der udstilles 3 services:

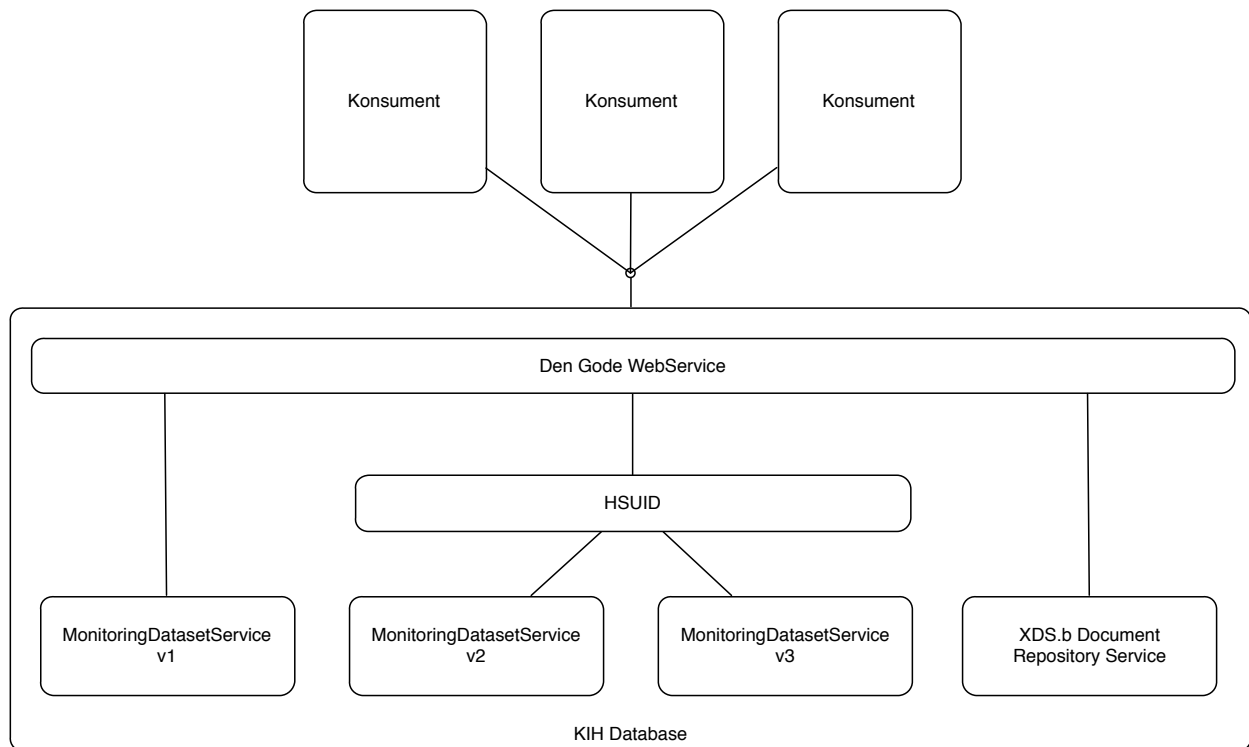
- MonitoringDataset (MDSS v. 1.0.1)
 - Hente monitoreringsdata
 - Upload af monitoreringsdata
 - Slette monitoreringsdata
- MonitoringDataset – v2 (MDSS v. 1.0.1)
 - Hente monitoreringsdata
 - Upload af monitoreringsdata
 - Slette monitoreringsdata
- MonitoringDataset (MDSS v. 1.0.2)
 - Hente monitoreringsdata

- Upload af monitoreringsdata
- Slette monitoreringsdata

Deruover udstiller KIH Databasen XDS.b DocumentRepository snitfalde.

Autentificering og autorisation bliver håndteret af SOSI biblioteket. SOSI biblioteket sikrer, at kun requests med validt ID kort kan kaldes den udstillede service. Derudover beskyttes Hente monitoreringsdata af HSUID check, som sikre, at patienter kun kan tilgå deres egne data.

Dette er illustreret i Figur 1.



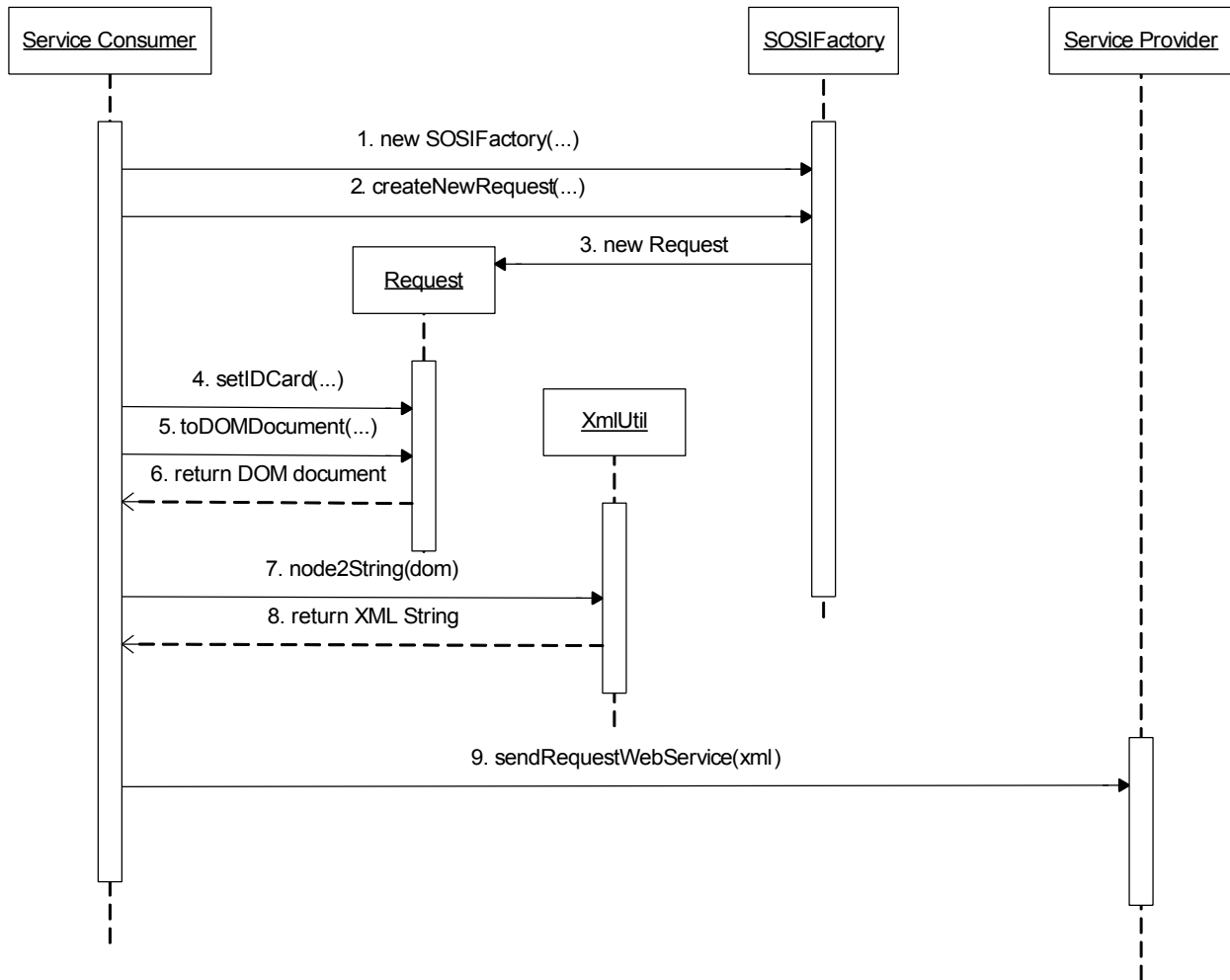
Figur 1: Logisk arkitektur

Teknisk vejledning

WSDL for services	https://kihdb-test.n.dk/services/
Service endpoint til test	https://kihdb-test.n.dk/services/
Test STS	http://test1.ekstern-test.nspop.dk:8080/sts/services/SecurityTokenService

Selve service adgang sker i som beskrevet i [SOSIPROG] sektion 4.4

Interaktionen er illustreret i nedenstående sekvens diagram:



Figur 2: Sekvens diagram

I forbindelse med signering af ID kort til brug ved service kald kan SOSI test STS anvendes.

Anvendelse af SOSI og kald af service

For at kalde den udstillede service skal følgende trin udføres:

1. Fremskaf validt ID kort, signeret af STS ([SOSIPROG] sektion 4.3)
2. Tilføj signeret ID kort til request
3. Kald operation på service ([SOSIPROG], sektion 4.4)

I det efterfølgende vises et eksempel på et request og reply fra hver service operation.

MonitoringDataset (MDSS v. 1.0.1)

Upload af monitoreringsdata

Request:

```
<?xml version="1.0" encoding="UTF-8" ?>
<soapenv:Envelope xmlns:soapenv="http://schemas.xmlsoap.org/soap/envelope/"
  xmlns:ds="http://www.w3.org/2000/09/xmldsig#"
  xmlns:medcom="http://www.medcom.dk/dgws/2006/04/dgws-1.0.xsd"
  xmlns:saml="urn:oasis:names:tc:SAML:2.0:assertion"
  xmlns:sosi="http://www.sosi.dk/sosi/2006/04/sosi-1.0.xsd"
  xmlns:wsa="http://schemas.xmlsoap.org/ws/2004/08/addressing"
  xmlns:wsse="http://docs.oasis-open.org/wss/2004/01/oasis-200401-wss-wssecurity-
secect-1.0.xsd"
  xmlns:wst="http://schemas.xmlsoap.org/ws/2005/02/trust"
  xmlns:wsu="http://docs.oasis-open.org/wss/2004/01/oasis-200401-wss-wssecurity-
utility-1.0.xsd"
  xmlns:xsd="http://www.w3.org/2001/XMLSchema"
  xmlns:xsi="http://www.w3.org/2001/XMLSchema-instance"
  id="Envelope">
  <soapenv:Header/>
  <soapenv:Body>
    <CreateMonitoringDataset xmlns="urn:oio:medcom:monitoringdataset:1.0.1"
      xmlns:ns2="urn:oio:medcom:chronicdataset:1.0.0"
      xmlns:ns3="urn:oio:medcom:chronicdataset:1.0.1">
      <CreateMonitoringDatasetRequestMessage>
        <PersonCivilRegistrationIdentifier>1010100202</PersonCivilRegistrationIdentifier>
        <ns3:SelfMonitoredSample>
          <ns3:LaboratoryReportExtendedCollection>
            <ns3:LaboratoryReportExtended>
              <ns2:UuidIdentifier>6c56d94d-1347-43b2-97ae-
d3d50409b590</ns2:UuidIdentifier>
              <ns2:CreatedDateTime>2006-05-
04T18:13:51.000+02:00</ns2:CreatedDateTime>
              <ns2:AnalysisText>FVC</ns2:AnalysisText>
              <ns2:ResultText>3.7</ns2:ResultText>
              <ns2:ResultEncodingIdentifier>numeric</ns2:ResultEncodingIdentifier>
              <ns2:ResultUnitText>Liter</ns2:ResultUnitText>
              <ns3:ResultTypeOfInterval>therapeutic</ns3:ResultTypeOfInterval>
            </ns3:LaboratoryReportExtended>
          </ns3:LaboratoryReportExtendedCollection>
          <ns2:NationalSampleIdentifier>999999991</ns2:NationalSampleIdentifier>
          <ns2:IupacIdentifier>MCS88016</ns2:IupacIdentifier>
          <ns2:ProducerOfLabResult>
            <ns2:Identifier>Patient målt</ns2:Identifier>
            <ns2:IdentifierCode>PST</ns2:IdentifierCode>
          </ns2:ProducerOfLabResult>
          <ns3:Instrument>
            <ns3:MedComID>EPQ1225</ns3:MedComID>
            <ns3:Manufacturer>AD Medical</ns3:Manufacturer>
            <ns3:ProductType>Multifunction Kit</ns3:ProductType>
            <ns3:Model>UA-767PTB-C</ns3:Model>
            <ns3:SoftwareVersion>10.0.3452r45</ns3:SoftwareVersion>
          </ns3:Instrument>
          <ns3:HealthCareProfessionalComment>[Pt. havde meget svært ved at
puste igennem idag]
        </ns3:HealthCareProfessionalComment>
        <ns3:MeasuringCircumstances>[Udblæsningen blev foretaget siddende på
en stol lige efter
morgenmaden]
```

```
        </ns3:MeasuringCircumstances>
      </ns3:LaboratoryReportExtended>
    </ns3:LaboratoryReportExtendedCollection>
    <ns2:CreatedByText>Helbredsprofilen</ns2:CreatedByText>
  </ns3:SelfMonitoredSample>
</CreateMonitoringDatasetRequestMessage>
</CreateMonitoringDataset>
</soapenv:Body>
</soapenv:Envelope>
```

Response:

```
<soap:Envelope xmlns:soap="http://schemas.xmlsoap.org/soap/envelope/">
  <soap:Body>
    <CreateMonitoringDatasetResponse xmlns="urn:oio:medcom:monitoringdataset:1.0.1"
  xmlns:ns2="urn:oio:medcom:chronicdataset:1.0.0" xmlns:ns3="urn:oio:medcom:chronicdataset:1.0.1"
  xmlns:ns4="http://rep.oio.dk/cpr.dk/xml/schemas/core/2005/03/18/"
  xmlns:ns5="http://rep.oio.dk/ebxml/xml/schemas/dkcc/2003/02/13/"
  xmlns:ns6="http://rep.oio.dk/itst.dk/xml/schemas/2006/01/17/"
  xmlns:ns7="http://rep.oio.dk/ebxml/xml/schemas/dkcc/2005/03/15/"
  xmlns:ns8="http://rep.oio.dk/xkom.dk/xml/schemas/2005/03/15/"
  xmlns:ns9="http://www.dkma.dk/medicinecard/xml.schema/2008/06/01"
  xmlns:ns10="http://www.dkma.dk/medicinecard/xml.schema/2009/01/01">
      <CreateMonitoringDatasetResponseMessage>
        <ns2:UuidIdentifier>6c56d94d-1347-43b2-97ae-d3d50409b590</ns2:UuidIdentifier>
      </CreateMonitoringDatasetResponseMessage>
    </CreateMonitoringDatasetResponse>
  </soap:Body>
</soap:Envelope>
```

Hente monitoreringsdata

Request:

```
<soapenv:Envelope xmlns:soapenv="http://schemas.xmlsoap.org/soap/envelope/"
  xmlns:urn="urn:oio:medcom:monitoringdataset:1.0.1">
  <soapenv:Header/>
  <soapenv:Body>
    <urn:GetMonitoringDataset>
      <!--Optional:-->
      <urn:GetMonitoringDatasetRequestMessage>

<urn:PersonCivilRegistrationIdentifier>1010100202</urn:PersonCivilRegistrationIdentifier>
      </urn:GetMonitoringDatasetRequestMessage>
    </urn:GetMonitoringDataset>
  </soapenv:Body>
</soapenv:Envelope>
```

Response:

```
<soap:Envelope xmlns:soap="http://schemas.xmlsoap.org/soap/envelope/">
  <soap:Body>
    <GetMonitoringDatasetResponse xmlns="urn:oio:medcom:monitoringdataset:1.0.1"
  xmlns:ns2="urn:oio:medcom:chronicdataset:1.0.0" xmlns:ns3="urn:oio:medcom:chronicdataset:1.0.1"
  xmlns:ns4="http://rep.oio.dk/cpr.dk/xml/schemas/core/2005/03/18/"
  xmlns:ns5="http://rep.oio.dk/ebxml/xml/schemas/dkcc/2003/02/13/"
  xmlns:ns6="http://rep.oio.dk/itst.dk/xml/schemas/2006/01/17/"
  xmlns:ns7="http://rep.oio.dk/ebxml/xml/schemas/dkcc/2005/03/15/"
  xmlns:ns8="http://rep.oio.dk/xkom.dk/xml/schemas/2005/03/15/"
  xmlns:ns9="http://www.dkma.dk/medicinecard/xml.schema/2008/06/01"
  xmlns:ns10="http://www.dkma.dk/medicinecard/xml.schema/2009/01/01">
```

```

<GetMonitoringDatasetResponseMessage>
  <ns3:CitizenMonitoringDataset>
    <ns2:Citizen>

<ns4:PersonCivilRegistrationIdentifier>1010100202</ns4:PersonCivilRegistrationIdentifier>
  </ns2:Citizen>
  <ns3:SelfMonitoredSampleCollection>
    <ns3:SelfMonitoredSample>
      <ns3:LaboratoryReportExtendedCollection>
        <ns3:LaboratoryReportExtended>
          <ns2:UuidIdentifier>6c56d94d-1347-43b2-97ae-
d3d50409b590</ns2:UuidIdentifier>
          <ns2:CreatedDateTime>2006-05-
04T18:13:51.000+02:00</ns2:CreatedDateTime>
          <ns2:AnalysisText>FVC</ns2:AnalysisText>
          <ns2:ResultText>3.7</ns2:ResultText>
          <ns2:ResultUnitText>Liter</ns2:ResultUnitText>
          <ns3:ResultTypeOfInterval>therapeutic</ns3:ResultTypeOfInterval>
          <ns2:NationalSampleIdentifier>999999991</ns2:NationalSampleIdentifier>
          <ns2:IupacIdentifier>MCS88016</ns2:IupacIdentifier>
          <ns2:ProducerOfLabResult>
            <ns2:Identifier>Patient målt</ns2:Identifier>
            <ns2:IdentifierCode>PST</ns2:IdentifierCode>
          </ns2:ProducerOfLabResult>
          <ns3:Instrument>
            <ns3:MedComID>EPQ1225</ns3:MedComID>
            <ns3:Manufacturer>AD Medical</ns3:Manufacturer>
            <ns3:ProductType>Multifunction Kit</ns3:ProductType>
            <ns3:Model>UA-767PTB-C</ns3:Model>
            <ns3:SoftwareVersion>10.0.3452r45</ns3:SoftwareVersion>
          </ns3:Instrument>
          <ns3:HealthCareProfessionalComment>[Pt. havde meget svært ved at puste
igennem idag]</ns3:HealthCareProfessionalComment>
          <ns3:MeasuringCircumstances>[Udblæsningen blev foretaget siddende på
en stol lige efter
              morgenmaden]</ns3:MeasuringCircumstances>
        </ns3:LaboratoryReportExtended>
      </ns3:LaboratoryReportExtendedCollection>
      <ns2:CreatedByText>Helbredsprofilen</ns2:CreatedByText>
    </ns3:SelfMonitoredSample>
  </ns3:SelfMonitoredSampleCollection>
</ns3:CitizenMonitoringDataset>
</GetMonitoringDatasetResponseMessage>
</GetMonitoringDatasetResponse>
</soap:Body>
</soap:Envelope>

```

Slette monitoreringsdata

For slette data returneres altid et tomt svar, hvis operation er gået godt, ellers returneres en SOAP Fault.

Request

```

<soapenv:Envelope xmlns:soapenv="http://schemas.xmlsoap.org/soap/envelope/"
xmlns:urn="urn:oio:medcom:monitoringdataset:1.0.1"
xmlns:urn1="urn:oio:medcom:chronicdataset:1.0.0">
  <soapenv:Header/>
  <soapenv:Body>

```



```
<urn:DeleteMonitoringDataset>
  <urn:DeleteMonitoringDatasetRequestMessage>

<urn:PersonCivilRegistrationIdentifier>1010100202</urn:PersonCivilRegistrationIdentifier>
  <urn1:UuidIdentifier>6c56d94d-1347-43b2-97ae-d3d50409b590</urn1:UuidIdentifier>
  </urn:DeleteMonitoringDatasetRequestMessage>
</urn:DeleteMonitoringDataset>
</soapenv:Body>
</soapenv:Envelope>
```

Reply:

```
<soap:Envelope xmlns:soap="http://schemas.xmlsoap.org/soap/envelope/">
  <soap:Body>
    <DeleteMonitoringDatasetResponse xmlns="urn:oio:medcom:monitoringdataset:1.0.1"
  xmlns:ns2="urn:oio:medcom:chronicdataset:1.0.0" xmlns:ns3="urn:oio:medcom:chronicdataset:1.0.1"
  xmlns:ns4="http://rep.oio.dk/cpr.dk/xml/schemas/core/2005/03/18/"
  xmlns:ns5="http://rep.oio.dk/ebxml/xml/schemas/dkcc/2003/02/13/"
  xmlns:ns6="http://rep.oio.dk/itst.dk/xml/schemas/2006/01/17/"
  xmlns:ns7="http://rep.oio.dk/ebxml/xml/schemas/dkcc/2005/03/15/"
  xmlns:ns8="http://rep.oio.dk/xkom.dk/xml/schemas/2005/03/15/"
  xmlns:ns9="http://www.dkma.dk/medicinocard/xml.schema/2008/06/01"
  xmlns:ns10="http://www.dkma.dk/medicinocard/xml.schema/2009/01/01">
      <DeleteMonitoringDatasetResponseMessage/>
    </DeleteMonitoringDatasetResponse>
  </soap:Body>
</soap:Envelope>
```

MonitoringDataset – v2 (MDSS v. 1.0.1)

Upload af monitoreringsdata

Request

```
<soapenv:Envelope xmlns:soapenv="http://schemas.xmlsoap.org/soap/envelope/"
  xmlns:urn="urn:oio:medcom:monitoringdataset:1.0.1"
  xmlns:urn1="urn:oio:medcom:chronicdataset:1.0.0"
  xmlns:ns="http://rep.oio.dk/cpr.dk/xml/schemas/core/2005/03/18/"
  xmlns:ns1="http://rep.oio.dk/itst.dk/xml/schemas/2006/01/17/"
  xmlns:ns2="http://rep.oio.dk/ebxml/xml/schemas/dkcc/2003/02/13/"
  xmlns:ns3="http://rep.oio.dk/xkom.dk/xml/schemas/2005/03/15/"
  xmlns:ns4="http://rep.oio.dk/ebxml/xml/schemas/dkcc/2005/03/15/"
  xmlns:urn2="urn:oio:medcom:chronicdataset:1.0.1"
  xmlns:mc="urn:oio:medcom:chronicdataset:1.0.0"
  xmlns:mc101="urn:oio:medcom:chronicdataset:1.0.1"
  xmlns:cpr="http://rep.oio.dk/cpr.dk/xml/schemas/core/2005/03/18/"
  xmlns:xkom="http://rep.oio.dk/xkom.dk/xml/schemas/2005/03/15/"
  xmlns:itst="http://rep.oio.dk/itst.dk/xml/schemas/2006/01/17/"
  xmlns:dkcc="http://rep.oio.dk/ebxml/xml/schemas/dkcc/2003/02/13/"
  xmlns:dkcc2005="http://rep.oio.dk/ebxml/xml/schemas/dkcc/2005/03/15/">
  <soapenv:Header/>
  <soapenv:Body>
    <urn:CreateMonitoringDataset>
      <!--Optional:-->
      <urn:CreateMonitoringDatasetRequestMessage>
        <!--1 or more repetitions:-->
        <urn:MonitoringDatasetCollection>
          <mc:Citizen>
            <cpr:PersonCivilRegistrationIdentifier>0307539996</cpr:PersonCivilRegistrationIdentifier>
```

```

<itst:PersonNameStructure>
  <dkcc:PersonGivenName>FornavnK8</dkcc:PersonGivenName>
  <dkcc:PersonSurnameName>EfternavnK8</dkcc:PersonSurnameName>
</itst:PersonNameStructure>
<xkom:AddressPostal>
  <dkcc2005:StreetName>AdresseK8</dkcc2005:StreetName>
  <dkcc:StreetBuildingIdentifier>8</dkcc:StreetBuildingIdentifier>
  <dkcc2005:PostCodeIdentifier>9998</dkcc2005:PostCodeIdentifier>
  <dkcc2005:DistrictName>ByK8</dkcc2005:DistrictName>
</xkom:AddressPostal>
<mc:PhoneNumberIdentifier>99999999</mc:PhoneNumberIdentifier>
<mc:EmailAddressIdentifier>MailK8@mail.dk</mc:EmailAddressIdentifier>
</mc:Citizen>
<mc101:SelfMonitoredSample>
  <mc101:LaboratoryReportExtendedCollection>
    <mc101:LaboratoryReportExtended>
      <mc:UuidIdentifier>5d0ac8b1-0fb2-11e3-8ffd-0800200c9a66</mc:UuidIdentifier>
      <mc:CreatedDateTime>2013-08-23T11:15:25Z</mc:CreatedDateTime>
      <mc:AnalysisText>Calprotectin;F</mc:AnalysisText>
      <mc:ResultText>83.2</mc:ResultText>
      <mc:ResultEncodingIdentifier>numeric</mc:ResultEncodingIdentifier>
      <mc:ResultOperatorIdentifier>less_than</mc:ResultOperatorIdentifier>
      <mc:ResultUnitText>mg/kg</mc:ResultUnitText>
      <mc:ResultAbnormalIdentifier>to_high</mc:ResultAbnormalIdentifier>
      <mc:ResultMinimumText>0</mc:ResultMinimumText>
      <mc:ResultMaximumText>50</mc:ResultMaximumText>
      <mc101:ResultTypeOfInterval>physiological</mc101:ResultTypeOfInterval>
      <mc:NationalSampleIdentifier>99999999950</mc:NationalSampleIdentifier>
      <mc:IupacIdentifier>NPU26814</mc:IupacIdentifier>
      <mc:ProducerOfLabResult>
        <mc:Identifier>Patient målt</mc:Identifier>
        <mc:IdentifierCode>POT</mc:IdentifierCode>
      </mc:ProducerOfLabResult>
      <mc101:Instrument>
        <mc101:MedComID>EPQ12235</mc101:MedComID>
        <mc101:Manufacturer>Calpro AS</mc101:Manufacturer>
        <mc101:ProductType>CalproLab</mc101:ProductType>
        <mc101:Model>ELISA Kit</mc101:Model>
        <mc101:SoftwareVersion>EL-2013r55</mc101:SoftwareVersion>
      </mc101:Instrument>
      <mc101:MeasurementTransferredBy>automatic</mc101:MeasurementTransferredBy>
      <mc101:MeasurementLocation>home</mc101:MeasurementLocation>

    <mc101:MeasuringDataClassification>clinical</mc101:MeasuringDataClassification>
      <mc101:MeasurementDuration>10 sek</mc101:MeasurementDuration>
      <mc101:MeasurementScheduled>scheduled</mc101:MeasurementScheduled>
      <mc101:HealthCareProfessionalComment>Pt. er ny bruger af
      Calpro</mc101:HealthCareProfessionalComment>
      <mc101:MeasuringCircumstances>Måling foretaget efter indtagelse af 1/2 liter
      vand</mc101:MeasuringCircumstances>
    </mc101:LaboratoryReportExtended>
  </mc101:LaboratoryReportExtendedCollection>
  <mc:CreatedByText>ConstantMed</mc:CreatedByText>
</mc101:SelfMonitoredSample>

</urn:MonitoringDatasetCollection>
</urn:CreateMonitoringDatasetRequestMessage>
</urn:CreateMonitoringDataset>
</soapenv:Body>
</soapenv:Envelope>

```

Reply

```
<soap:Envelope xmlns:soap="http://schemas.xmlsoap.org/soap/envelope/">
  <soap:Body>
    <CreateMonitoringDatasetResponse xmlns="urn:oio:medcom:monitoringdataset:1.0.1"
xmlns:ns2="urn:oio:medcom:chronicdataset:1.0.0"
xmlns:ns3="http://rep.oio.dk/cpr.dk/xml/schemas/core/2005/03/18/"
xmlns:ns4="http://rep.oio.dk/ebxml/xml/schemas/dkcc/2003/02/13/"
xmlns:ns5="http://rep.oio.dk/itst.dk/xml/schemas/2006/01/17/"
xmlns:ns6="http://rep.oio.dk/ebxml/xml/schemas/dkcc/2005/03/15/"
xmlns:ns7="http://rep.oio.dk/xkom.dk/xml/schemas/2005/03/15/"
xmlns:ns8="urn:oio:medcom:chronicdataset:1.0.1"
xmlns:ns9="http://www.dkma.dk/medicinecard/xml.schema/2008/06/01"
xmlns:ns10="http://www.dkma.dk/medicinecard/xml.schema/2009/01/01">
      <CreateMonitoringDatasetResponseMessage>
        <MonitoringDatasetCollectionResponse>

<ns3:PersonCivilRegistrationIdentifier>0307539996</ns3:PersonCivilRegistrationIdentifier>
          <ns2:UuidIdentifier>5d0ac8b1-0fb2-11e3-8ffd-0800200c9a66</ns2:UuidIdentifier>
        </MonitoringDatasetCollectionResponse>
      </CreateMonitoringDatasetResponseMessage>
    </CreateMonitoringDatasetResponse>
  </soap:Body>
</soap:Envelope>
```

Hente monitoreringsdata

Request

```
<soapenv:Envelope xmlns:soapenv="http://schemas.xmlsoap.org/soap/envelope/"
xmlns:urn="urn:oio:medcom:monitoringdataset:1.0.1">
  <soapenv:Header/>
  <soapenv:Body>
    <urn:GetMonitoringDataset>
      <!--Optional:-->
      <urn:GetMonitoringDatasetRequestMessage>

<urn:PersonCivilRegistrationIdentifier>0307539996</urn:PersonCivilRegistrationIdentifier>
      </urn:GetMonitoringDatasetRequestMessage>
    </urn:GetMonitoringDataset>
  </soapenv:Body>
</soapenv:Envelope>
```

Reply

```
<soap:Envelope xmlns:soap="http://schemas.xmlsoap.org/soap/envelope/">
  <soap:Body>
    <GetMonitoringDatasetResponse xmlns="urn:oio:medcom:monitoringdataset:1.0.1"
xmlns:ns2="urn:oio:medcom:chronicdataset:1.0.0"
xmlns:ns3="http://rep.oio.dk/cpr.dk/xml/schemas/core/2005/03/18/"
xmlns:ns4="http://rep.oio.dk/ebxml/xml/schemas/dkcc/2003/02/13/"
xmlns:ns5="http://rep.oio.dk/itst.dk/xml/schemas/2006/01/17/"
xmlns:ns6="http://rep.oio.dk/ebxml/xml/schemas/dkcc/2005/03/15/"
xmlns:ns7="http://rep.oio.dk/xkom.dk/xml/schemas/2005/03/15/"
xmlns:ns8="urn:oio:medcom:chronicdataset:1.0.1"
xmlns:ns9="http://www.dkma.dk/medicinecard/xml.schema/2008/06/01"
xmlns:ns10="http://www.dkma.dk/medicinecard/xml.schema/2009/01/01">
      <GetMonitoringDatasetResponseMessage>
        <ns8:CitizenMonitoringDataset>
          <ns2:Citizen>
```

```
<ns3:PersonCivilRegistrationIdentifier>0307539996</ns3:PersonCivilRegistrationIdentifier>
  <ns5:PersonNameStructure>
    <ns4:PersonGivenName>FornavnK8</ns4:PersonGivenName>
    <ns4:PersonSurnameName>EfternavnK8</ns4:PersonSurnameName>
  </ns5:PersonNameStructure>
  <ns7:AddressPostal>
    <ns6:StreetName>AdresseK8 8</ns6:StreetName>
    <ns6:PostCodeIdentifier>9998</ns6:PostCodeIdentifier>
  </ns7:AddressPostal>
  <ns2:PhoneNumberIdentifier>99999999</ns2:PhoneNumberIdentifier>
  <ns2:EmailAddressIdentifier>MailK8@mail.dk</ns2:EmailAddressIdentifier>
</ns2:Citizen>
<ns8:SelfMonitoredSampleCollection>
  <ns8:SelfMonitoredSample>
    <ns8:LaboratoryReportExtendedCollection>
      <ns8:LaboratoryReportExtended>
        <ns2:UuidIdentifier>5d0ac8b1-0fb2-11e3-8ffd-
0800200c9a66</ns2:UuidIdentifier>
        <ns2:CreatedDateTime>2013-08-
23T13:15:25.000+02:00</ns2:CreatedDateTime>
        <ns2:AnalysisText>Calprotectin;F</ns2:AnalysisText>
        <ns2:ResultText>83.2</ns2:ResultText>
        <ns2:ResultOperatorIdentifier>less_than</ns2:ResultOperatorIdentifier>
        <ns2:ResultUnitText>mg/kg</ns2:ResultUnitText>
        <ns2:ResultAbnormalIdentifier>to_high</ns2:ResultAbnormalIdentifier>
        <ns2:ResultMinimumText>0</ns2:ResultMinimumText>
        <ns2:ResultMaximumText>50</ns2:ResultMaximumText>
        <ns8:ResultTypeOfInterval>physiological</ns8:ResultTypeOfInterval>
      </ns8:LaboratoryReportExtended>
    </ns8:LaboratoryReportExtendedCollection>
    <ns2:NationalSampleIdentifier>999999999950</ns2:NationalSampleIdentifier>
    <ns2:IupacIdentifier>NPU26814</ns2:IupacIdentifier>
    <ns2:ProducerOfLabResult>
      <ns2:Identifier>Patient målt</ns2:Identifier>
      <ns2:IdentifierCode>POT</ns2:IdentifierCode>
    </ns2:ProducerOfLabResult>
    <ns8:Instrument>
      <ns8:MedComID>EPQ12235</ns8:MedComID>
      <ns8:Manufacturer>Calpro AS</ns8:Manufacturer>
      <ns8:ProductType>CalproLab</ns8:ProductType>
      <ns8:Model>ELISA Kit</ns8:Model>
      <ns8:SoftwareVersion>EL-2013r55</ns8:SoftwareVersion>
    </ns8:Instrument>
    <ns8:MeasurementTransferredBy>automatic</ns8:MeasurementTransferredBy>
    <ns8:MeasurementLocation>home</ns8:MeasurementLocation>
  </ns8:SelfMonitoredSample>
</ns8:SelfMonitoredSampleCollection>
</ns8:CitizenMonitoringDataset>
</GetMonitoringDatasetResponseMessage>
</GetMonitoringDatasetResponse>
```

```
</soap:Body>  
</soap:Envelope>
```

Slette monitoreringsdata

For slette data returneres altid et tomt svar, hvis operation er gået godt, ellers returneres en SOAP Fault.

Request:

```
<soapenv:Envelope xmlns:soapenv="http://schemas.xmlsoap.org/soap/envelope/"  
xmlns:urn="urn:oio:medcom:monitoringdataset:1.0.1"  
xmlns:urn1="urn:oio:medcom:chronicdataset:1.0.0">  
  <soapenv:Header/>  
  <soapenv:Body>  
    <urn:DeleteMonitoringDataset>  
      <!--Optional:-->  
      <urn:DeleteMonitoringDatasetRequestMessage>  
  
        <urn:PersonCivilRegistrationIdentifier>0307539996</urn:PersonCivilRegistrationIdentifier>  
        <!--1 or more repetitions:-->  
        <urn1:UuidIdentifier>5d0ac8b1-0fb2-11e3-8ffd-0800200c9a66</urn1:UuidIdentifier>  
      </urn:DeleteMonitoringDatasetRequestMessage>  
    </urn:DeleteMonitoringDataset>  
  </soapenv:Body>  
</soapenv:Envelope>
```

Response

```
<soap:Envelope xmlns:soap="http://schemas.xmlsoap.org/soap/envelope/">  
  <soap:Body>  
    <DeleteMonitoringDatasetResponse xmlns="urn:oio:medcom:monitoringdataset:1.0.1"  
xmlns:ns2="urn:oio:medcom:chronicdataset:1.0.0"  
xmlns:ns3="http://rep.oio.dk/cpr.dk/xml/schemas/core/2005/03/18/"  
xmlns:ns4="http://rep.oio.dk/ebxml/xml/schemas/dkcc/2003/02/13/"  
xmlns:ns5="http://rep.oio.dk/itst.dk/xml/schemas/2006/01/17/"  
xmlns:ns6="http://rep.oio.dk/ebxml/xml/schemas/dkcc/2005/03/15/"  
xmlns:ns7="http://rep.oio.dk/xkom.dk/xml/schemas/2005/03/15/"  
xmlns:ns8="urn:oio:medcom:chronicdataset:1.0.1"  
xmlns:ns9="http://www.dkma.dk/medicinecard/xml.schema/2008/06/01"  
xmlns:ns10="http://www.dkma.dk/medicinecard/xml.schema/2009/01/01">  
      <DeleteMonitoringDatasetResponseMessage/>  
    </DeleteMonitoringDatasetResponse>  
  </soap:Body>  
</soap:Envelope>
```

MonitoringDataset (MDSS v. 1.0.2)

Hente monitoreringsdata

TDB

Upload af monitoreringsdata

TDB

Slette monitoreringsdata

For slette data returneres altid et tomt svar, hvis operation er gået godt, ellers returneres en SOAP Fault.

TDB

Dokumenthistorik

Version	Dato	Initialer	Ændring
1.0	21-12-2012	LCH	Dokument oprettet
1.1	22-01-2013	HRA	Reference til Den Gode Kroniker Service ændret fra version 0.6 til 1.0
1.2	22-04-2013	LCH	Opdateret med endpoint til MonitoringDataset service
1.3	23-04-2012	LCH	Indført MDSS for MonitoringDataset servicen efter kommentar fra MDM@medcom.dk
1.3.1	01-05-2013	HRA	Flyttet til ny skabelon. Tom læsevejledning fjernet.
1.4.0	18-09-2014	LCH	Opdateret med eksempler på version 1 og version 2 af MDSS